

ZVI SERIES-TT 2-1716

EAN 8422202217161



Reinforced resin castors with stainless steel (AISI 304) components. Especially indicated to stand high temperatures and high-loads up to 125kg (276lb).

It is used in: furnaces and light machinery. Mainly used in the industrial sector, aeronautic sector and automobile factories, food industry, vending machines, bakery machines, light machinery, containers and stainless steel constructions.

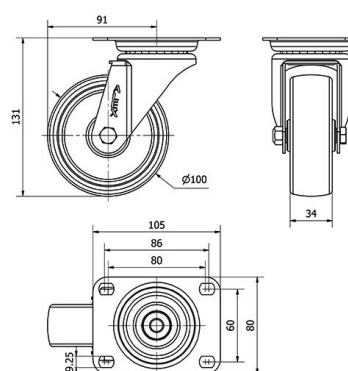
Suitable for mechanical engineering projects by craftsmen and project executors.

TD: resin castor. Indicated to the industrial sectors.

Technical Data

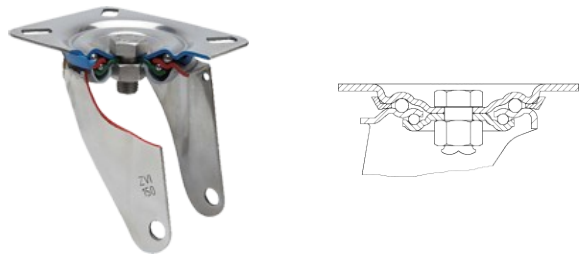
Housing Type	Swivel
Fitting Type	Plate
Braking System	Without Brake
Material	Phenolic Resin Wheel
Bearing	Plain
Diameter (mm)	100
Width of tyre (mm)	34
Plate dimensions (mm)	105x80
Distance between holes (mm)	86/80x60
Plate hole diameter (mm)	8
Offset (mm)	91
Overall height (mm)	131
Load	125
Unit Weight of the wheel (kg)	0.742
Volume (cm ³)	1504

CAD



To visualize the image with higher resolution and more technical details, please access to the CAD section

Brackets



Made of high-quality pressed stainless steel (AISI 304) up to 3 mm. Bracket made completely of stainless steel, corrosion-free, resistant to petrol, diesel,oils and grease. Manufactured to European standards EN 12530/12532.

Similar products



2-1475



2-1476

Wheel



Resin wheel up to 280°C when not in continuous use
Temperature range: -30° ÷ +280°

Rolling Resistance	Very Good
Noise during the march	Reasonable
Floor Protection	Reasonable